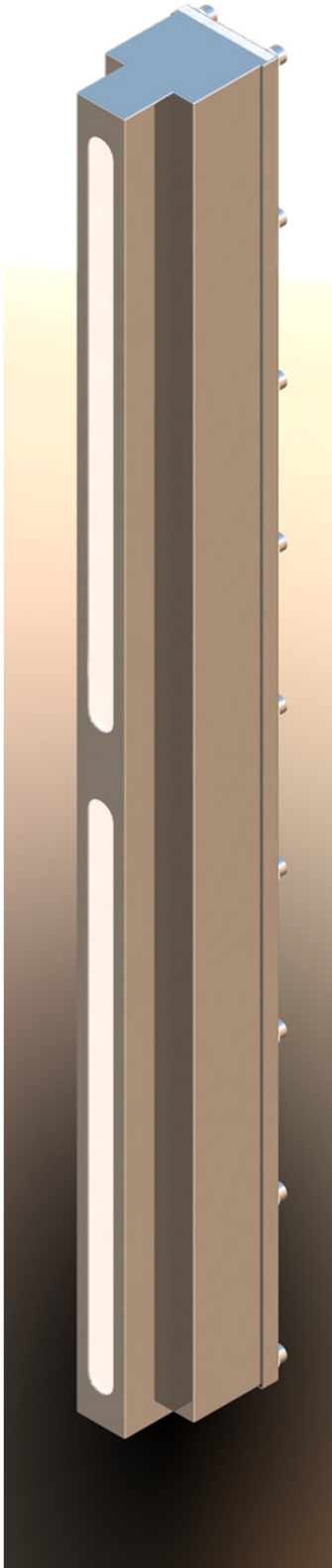


Illuminatore Led

Led Illuminator

LED



L'illuminatore LED Klenger offre un nuovo design più compatto e fornisce una luminosa più potente e omogenea con un minore consumo energetico.

The Klenger LED illuminator offers a new design, more compact, and provides a more powerful and consistent brightness with a lower energy consumption.

Materiale	Material
AISI 316	AISI 316
Pressacavo M20X1.5	Cable Gland M20X1.5

Caratteristiche	Features
Protezione IP 66	Protection IP66
Resistenza umidità 100%	Resistance to humidity 100%
Temperatura 46°	Temperature 46°

Valori in uscita/Output

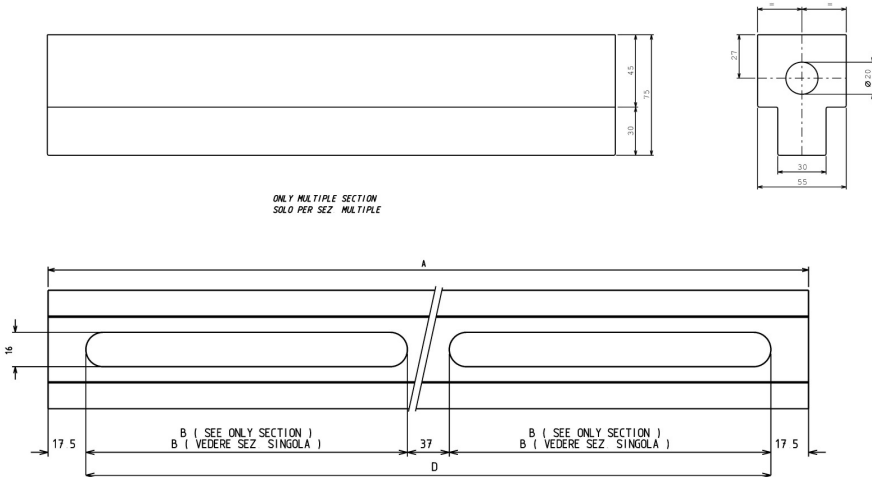
Trasformatore interno/ Internal Trasformer	LPH 12v	LPH 24v	LPH36v
Corrente Nominale Rated Current	1,5 A	0,75 A	0,5 A
Campo di Corrente Current Range	0-1,5A	0-0,75A	0-0,5°
Potenza Nominale Rated Power	18W	18W	18W

Valori in ingresso/Input

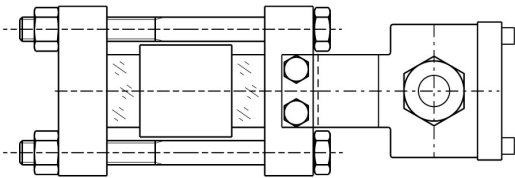
Campo di utilizzo/ Voltage Range	180 – 264 VAC 254 – 370 VDC
Campo di frequenza/ Frequency Range	47 – 63 Hz

Caratteristiche e dimensioni possono essere soggette a modifiche senza preavviso

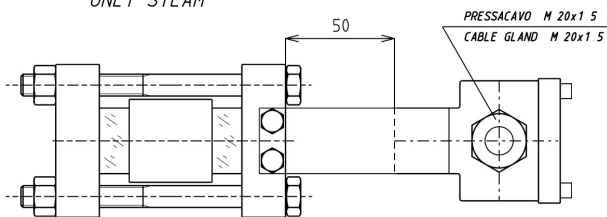
Design and dimensions could be subject to modification without notice



NORMALE
NORMAL



SOLO PER VAPORE
ONLY STEAM



<i>Tipo</i>	<i>Lungh. Corpo</i>	<i>Visibilità singola</i>	<i>Visibilità multipla.</i>
<i>Size</i>	<i>Body length</i>	<i>Single visibility</i>	<i>Multiple visibility</i>
	A	B	D
I	128	93	/
II	153	118	/
III	178	143	/
IV	203	168	/
V	233	198	/
VI	263	228	/
VII	293	258	/
VIII	333	298	/
IX	353	318	/
2 X IV	408	/	373
2X V	468	/	433
2 X VI	528	/	493
2 X VII	588	/	553
2 X VIII	668	/	633
2 X IX	708	/	673
3 X VI	793	/	758
3 X VII	883	/	848
3 X VIII	1003	/	968
3 X IX	1063	/	1028
4 X VII	1178	/	1143
4 X VIII	1338	/	1303

